

Do You Perform Luminex Multiplex Assays?
DID YOU KNOW... MilliporeSigma's Milliplex Assays
Can Be Used On Most Multiplexing Instruments?!
PLUS! You Can Order Through BIORESKO and SAVE!!!

Our Milliplex Assay Kits Work In Systems:
FlexMap 3D (Bio-Plex 3D), LX200 (Bio-Plex 200),
LX100 (Bio-Plex), MAGPIX, & More!

How To Easily Order Milliplex Assay Kits At BIORESKO:

You Know What You Want

1. Go To The
["EMD Milliplex Analyte Kit Builder"](#)
emdmillipore.com/milliplex
2. Design kits and add them to the cart.
Click on **"Print Cart As PDF"**.
Email the pdf to Amy and she will send a
quote to BIORESKO for you in 24-48 hours.

You Need Help Designing Your Kit

1. Contact Amy Johnson, PhD.,
MilliporeSigma Biomarker Specialist, at:
Amy.Johnson@emdmillipore.com
2. List the analytes you need and any
important info about your research.
She will help you design your kits, and send a
quote to BIORESKO for you in 24-48 hours.



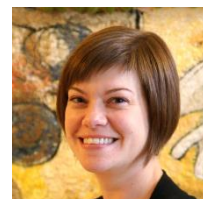
Discover More Flow Cytometry Solutions:

Amnis® Imaging Flow Cytometers, Muse® Cell Analyzer,
Guava® easyCyte Flow Cytometers, FlexMap 3D, MAGPIX,
LX200, and Flow Cytometry Kits & Reagents.

Questions, Consults, Or Quotes? Please Contact:

Amy R. Johnson, Ph.D.

Immunoassay Platform Specialist – Mid-Atlantic
Luminex, Milliplex, SMC/Singulex, ELISA, RIA
Cell: 434-249-1731 E-mail: Amy.Johnson@emdmillipore.com



Jill Clouse

Senior Sales Specialist For Everything Millipore & Sigma
Purchase All Millipore & Sigma Aldrich Products & Services at BIORESKO!
Cell: 410-200-5397 Email: jill.clouse@sial.com

